

FOOTHILL MUNICIPAL WATER DISTRICT
4536 Hampton Road
La Cañada Flintridge, California

A G E N D A
SPECIAL MEETING OF THE
BOARD OF DIRECTORS
FOOTHILL MUNICIPAL WATER DISTRICT
April 28, 2015
6:00 PM

Posted, April 24, 2015, 3 p.m.

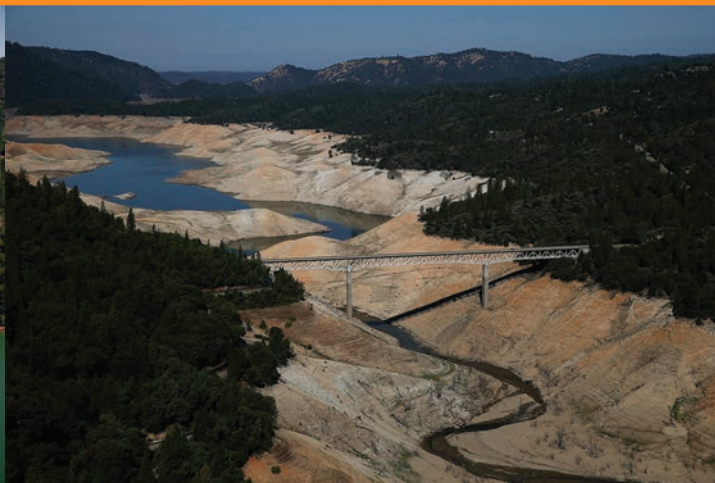
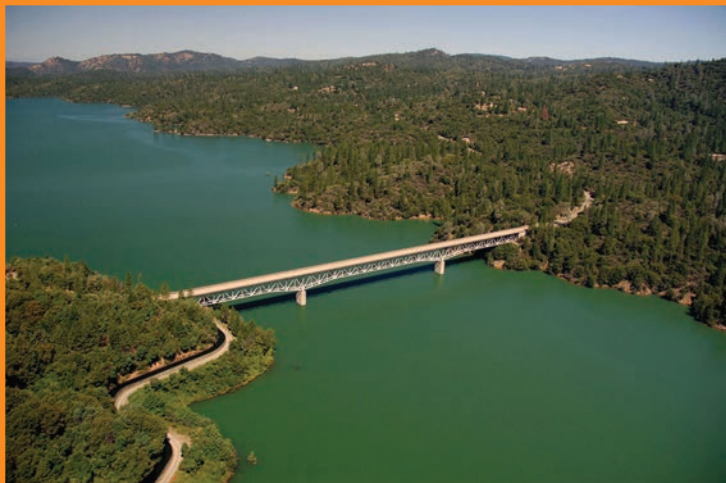
MEETING LOCATION:
LA CANADA PRESBYTERIAN CHURCH
626 FOOTHILL BLVD.
LA CANADA
(FELLOWSHIP HALL – AROUND BACK)

Teleconferencing will be used during this meeting from the following location:
None

- 1. Call to Order and Determination of a Quorum**
- 2. Pledge of Allegiance**
- 3. Preliminary Matters**
 - 3.1. Additions to Agenda (as required by Gov. Code 54954.2)
- 4. Public Comments**
 - 4.1. Opportunity for members of the public to address the board directly on items of public interest that are within the subject matter jurisdiction of the board (as required by Gov. Code 54954.3(a)). Speakers may be limited to two minutes each at the discretion of the President of the Board.
- 5. Information Item**
 - 5.1 Summary and Discussion of the statewide drought, water supplies and conservation.
- 6. Other Business**

Related to general operations, administration and policy items, future agenda items, and concerns of Board members
- 7. Adjournment**

Next Regular Board Meeting, May 18, 2015 at 3:00 PM



WATER CONSERVATION

What We Can Do!



HOSTED BY:



WHAT: Community Drought & Water Allocation Workshop

WHEN: Tuesday, April 28, 2015 (6 pm to 8 pm)

WHO: Communities of La Crescenta-Montrose, City of La Cañada Flintridge and Altadena

WHERE: La Cañada Presbyterian Church (626 Foothill Blvd., La Cañada Flintridge, CA 91011). The workshop is located in the Fellowship Hall.

Light refreshments will be served.

Please join us to learn more about upcoming drought actions that will impact the Foothill communities.

FOOTHILL MWD BOARD WORKSHOP - STATEWIDE DROUGHT, SUPPLIES AND CONSERVATION ACTIONS

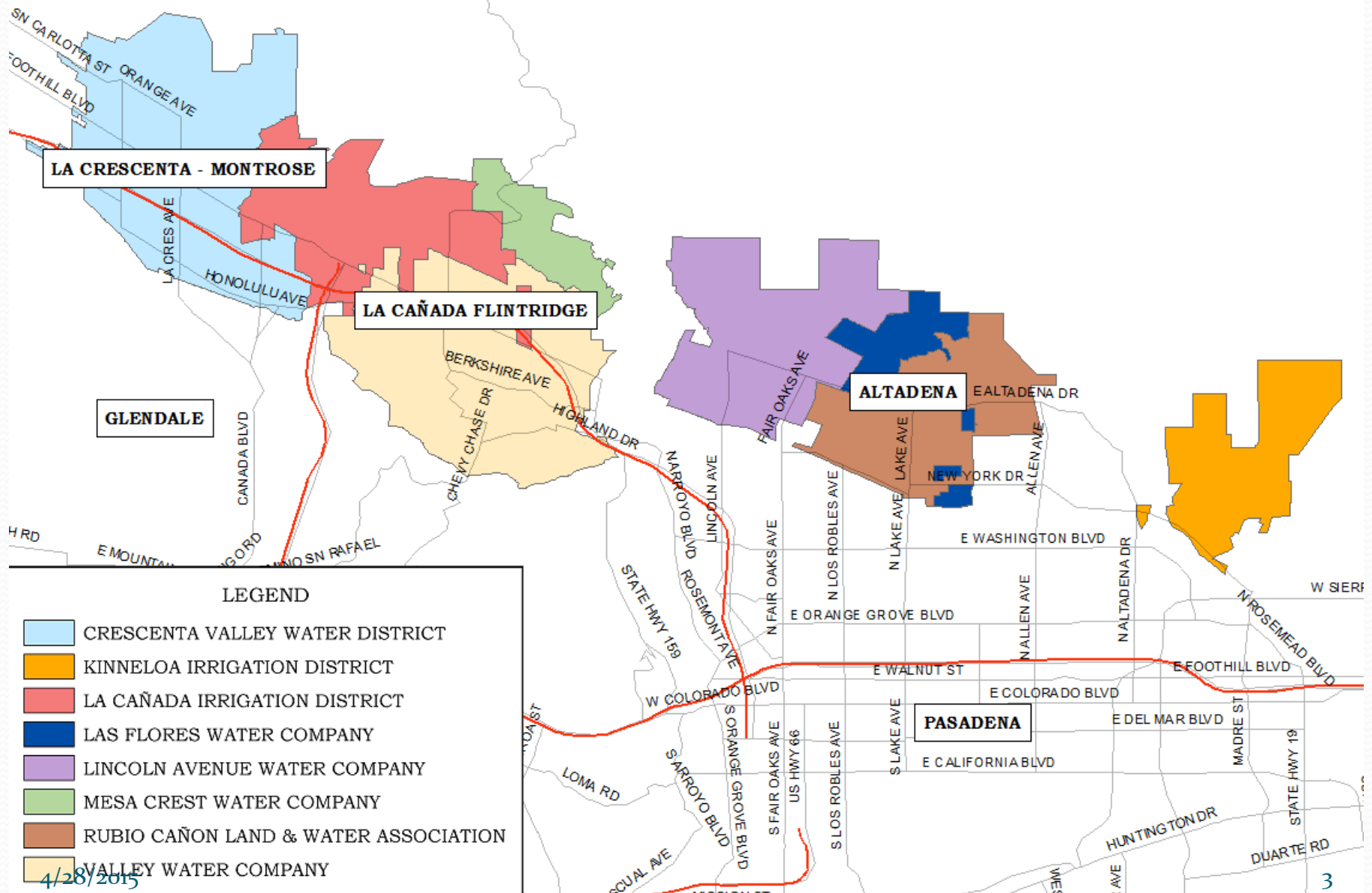


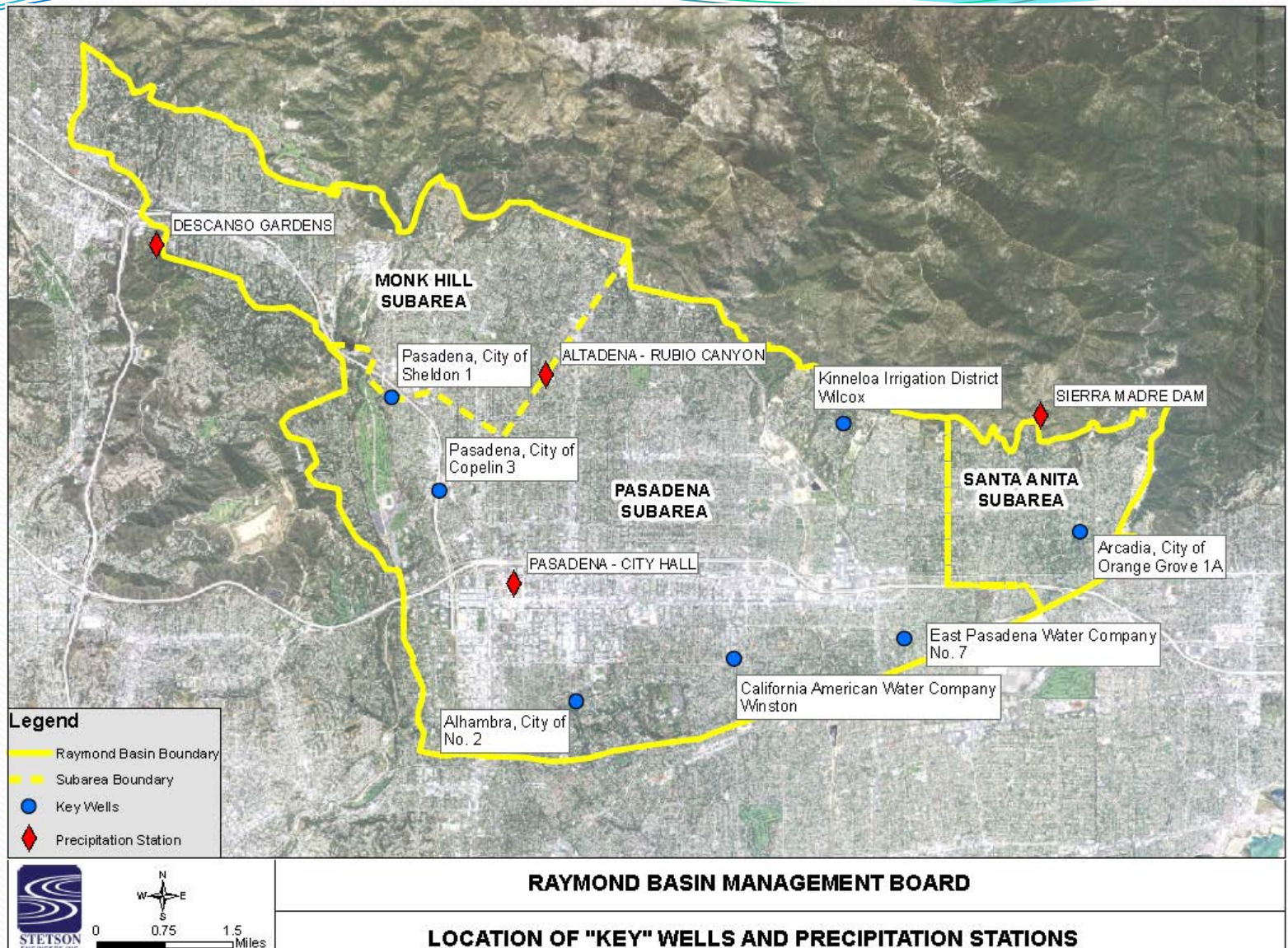
WHO WE ARE & WHAT WE DO

- Imported Water
Wholesaler/Special
District – Incorporated
1952
- Member agency of MWD
- Infrastructure
- District office located in
La Cañada, CA



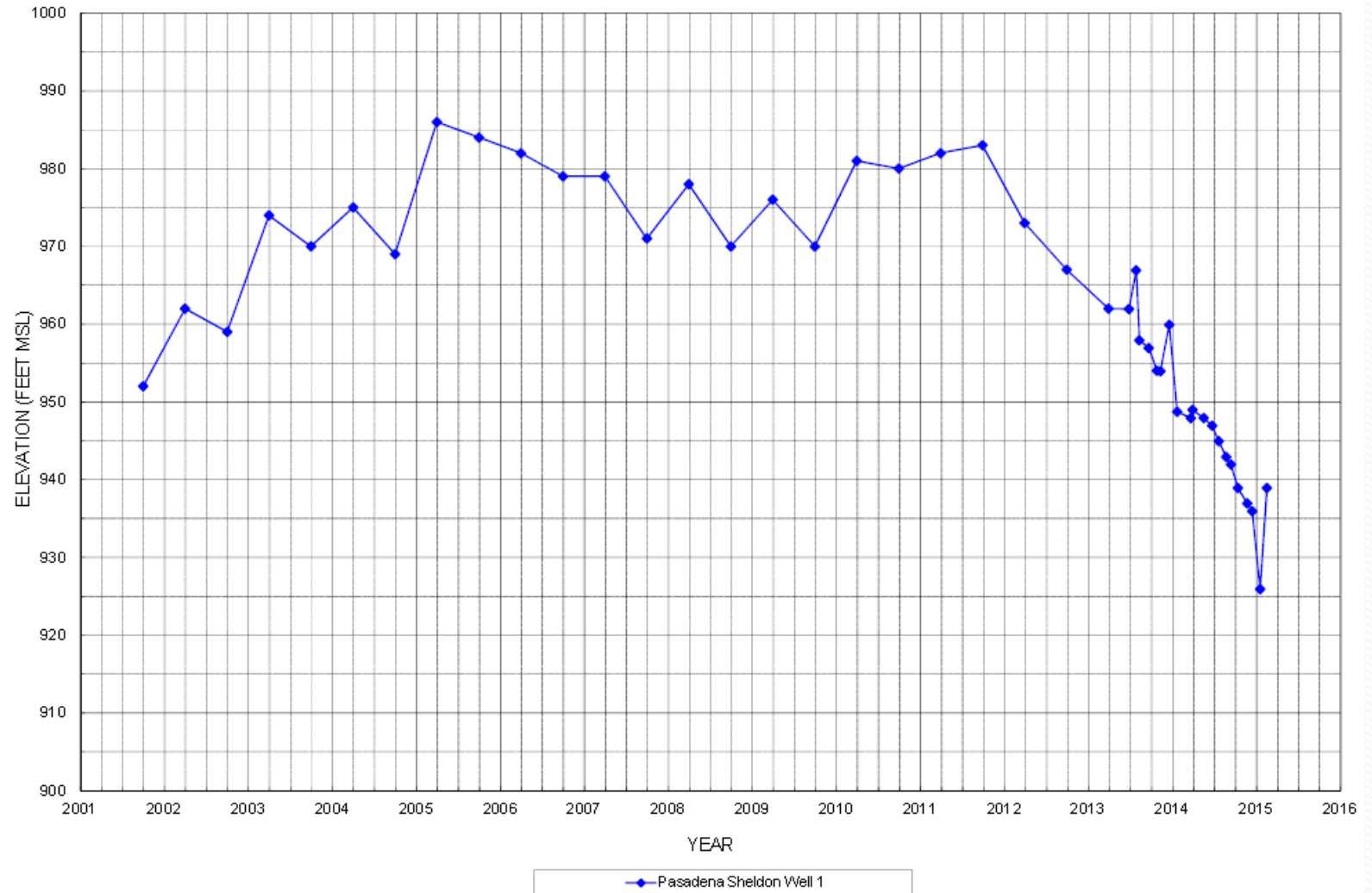
FOOTHILL MUNICIPAL WATER DISTRICT SERVICE AREA





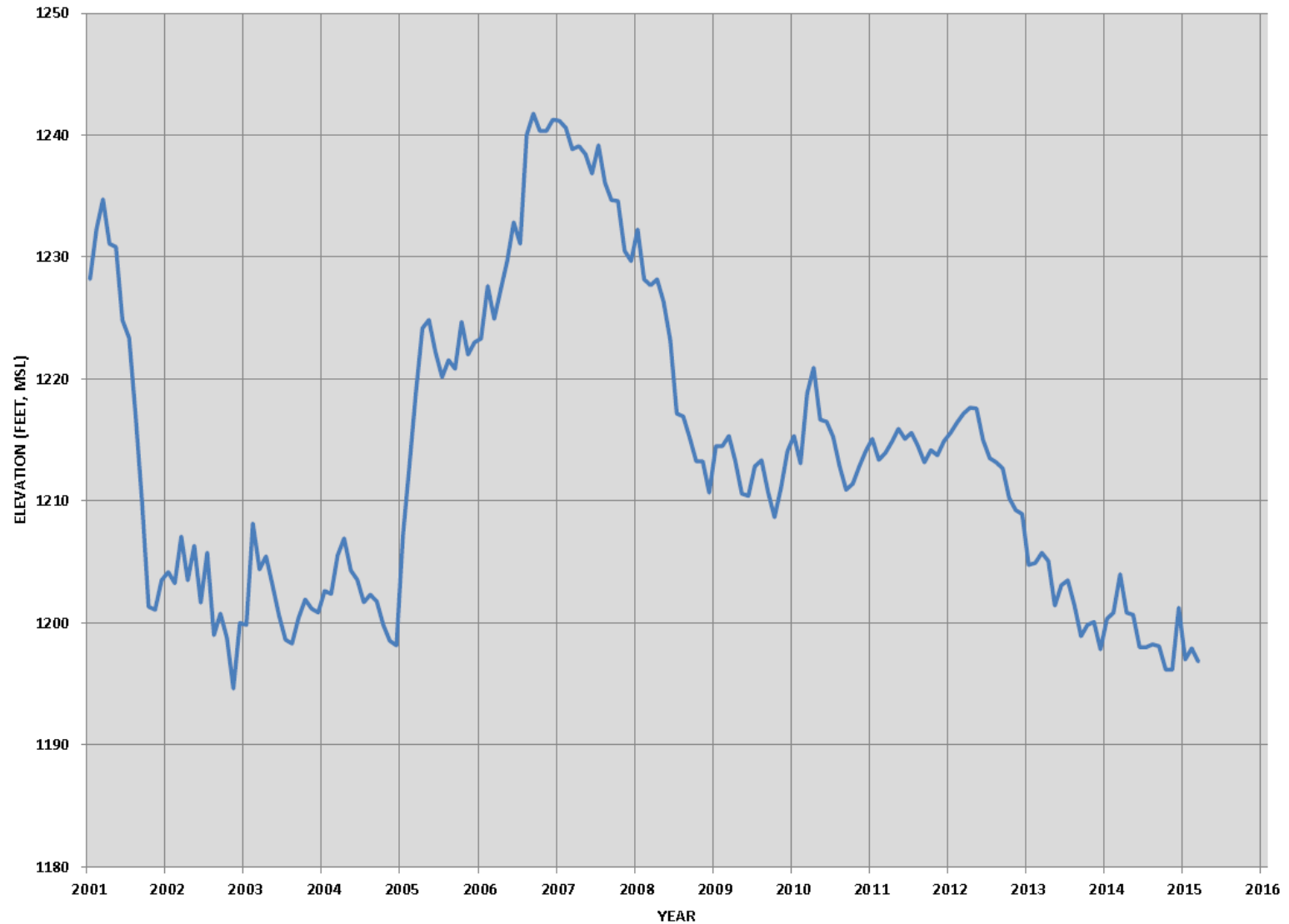
Source: Stetson Engineers

GROUNDWATER ELEVATION IN MONK HILL SUBAREA



Source: Stetson Engineers

AVERAGE GROUNDWATER ELEVATION IN VERDUGO BASIN - 2001 - 2015



Source: CVWD

WHAT WE ARE UP AGAINST

- Worst drought in recorded history
- Worst drought in 1,200 years (tree ring data)
- 2013 ended as driest year on record for California
- 2014 ended with virtually no snowpack
- Increased risk for wildfires
- Local groundwater levels continue to recede

How Long Will This Drought Last?

State and Regional Emergency Drought Actions

- Governor's Emergency Order:
 - 25% Mandatory Reduction in Statewide Water Use (May 2015-Feb 2016)
- MWD Imported Water Sale Curtailment: 15%
- State Water Project Allocations: 20%
- Central Valley Project Allocations: 0%

Governor's Emergency Order

- Incentivize drought tolerant landscape
- Support rebate programs for water efficient devices
- Restrict water use on commercial, industrial, & institutional properties
- Prohibit irrigation of ornamental turf on street medians with potable water supplies
- Prohibit irrigation of new construction with potable water (unless drip or microspray systems are used)
- Direct water suppliers to develop rate structures and pricing mechanisms to maximize water conservation

Proposed State Conservation Mandates

- Penalties of up to \$10,000 a day if agency does not meet conservation standard
- Penalty of up to \$500 a day for end-user

	Summer 2014 GPCD	Conservation Standards	Reporting
CVWD *	109.4	20%	Monthly
KID	Not on list	25% or 2 days irrigation	Dec. 15
LCID	Not on list	25% or 2 days irrigation	Dec. 15
LFWC	Not on list	25% or 2 days irrigation	Dec. 15
LAWC	137.2	28%	Monthly
MCWC	Not on list	25% or 2 days irrigation	Dec. 15
RCLWA	220.8	36%	Monthly
VWC	400.8	36%	Monthly
* Should be 24% with corrected numbers			

State Regulations

- No washing down hard or paved surfaces
- No runoff when irrigating
- Recirculated water required for water features
- Washing vehicles prohibited except w/ bucket or hose using self-closing shut-off nozzle
- No irrigation during and 48 hours after a measurable rainfall
- Restaurants cannot serve water except upon request
- Hotels give guests option to change linens

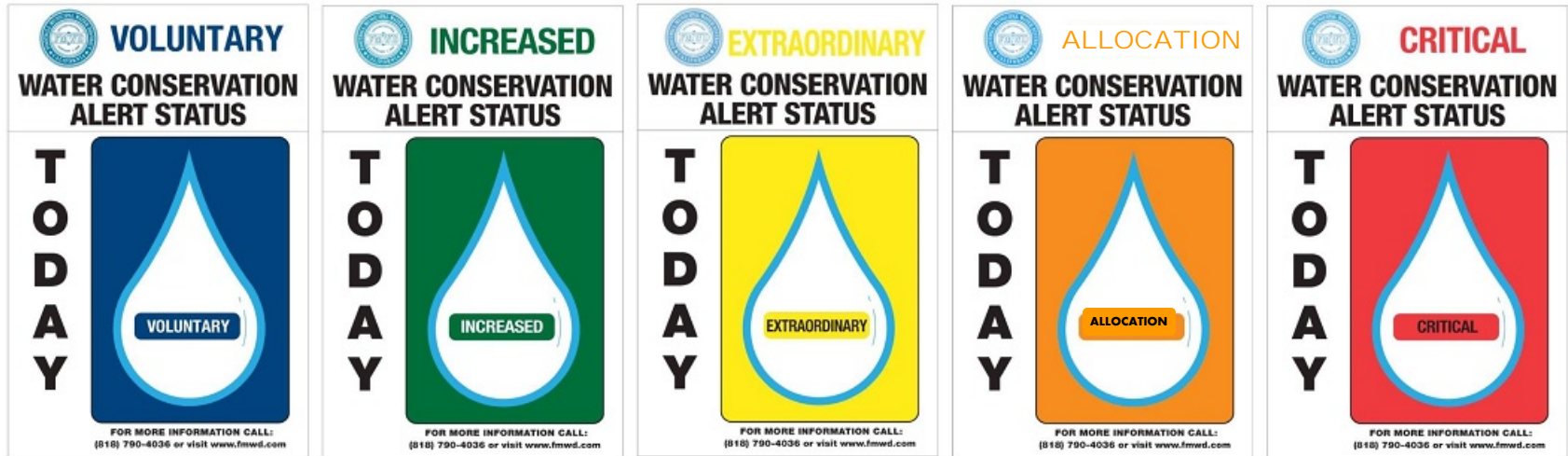
City of La Cañada Road Medians



WHAT IS FOOTHILL MWD DOING?



Current stage



What does allocation mean?

	Watering Restrictions	Time	Report Water Wasters
Crescenta Valley Water District	2 days - Tuesday and Saturday, No watering between 9 a.m. and 5 p.m.	No runoff	Actively Patrol, Call 818-248-3897 or form on website: cvwd.com
Kinneloa Irrigation District	2 days - no day specified, No watering between 9 a.m. and 6 p.m.	No runoff	Actively Patrol, Call 626-797-6295 or email kinneloa@outlook.com
La Canada Irrigation District	2 days - Odd numbered homes Tuesdays and Saturdays Even numbered Wednesdays and Sundays, No watering between 9 a.m. and 5 p.m.	10 minutes per station per day	Website has form: lacanadairrigation.org, Call office 818-790-6749
Las Flores Water Company	2 days - no specified day, No watering between 8 a.m. and 6 p.m.		Call office 626-797-1138
Lincoln Avenue Water Company	2 days - no specified day, No watering between 10 a.m. and 5 p.m.	No runoff	Beginning Active Patrol, Call office - 888-700-9995
Mesa Crest Water Company	25% reduction from previous year		Call office 818-790-2701
Rubio Canon Land & Water Assoc	2 days - No specified day, watering between 9 a.m. and 5 p.m.	No runoff	Active Patrol, Call office 626-797-0509 or form on website: rclwa.org
Valley Water Company	2 days - no day specified, No watering between 9 a.m. and 5 p.m.	10 minutes per station per day	Actively Patrol/Door Hangers/Call office 818-790-5516 or email: info@valleywater.com

What you can do...

Take this Action...	Save this Water
<u>In the Bathroom:</u>	
Take a shorter shower	2.5 gallons/minute
Turn off water when brushing teeth	2 gallons/minute
Fix leaky toilet	20 gallons/day
Buy high-efficiency toilets	Hundreds of gallons/year
<u>In the Kitchen and Laundry Area:</u>	
Run the dishwasher only when full	2-4.5 gallons/load
Don't leave the faucet running continuously when hand washing dishes	2 gallons/minute
Wash only full loads of clothes	15-50 gallons/load
Buy high-efficiency dishwashers and clothes washers	Hundreds of gallons/year

Source: Burbank Water and Power

Every Little Bit Saved Adds Up

What you can do...



USE A BROOM TO CLEAN
OUTDOOR AREAS

saves
💧 **8-18 GALLONS**
per minute



ADJUST SPRINKLER TO WATER
PLANTS, NOT DRIVEWAY

saves
💧 **12-15 GALLONS**
each time you water



USE MULCH ON SOIL
SURFACE

saves
💧 **20-30 GALLONS**
per 1,000 sq. ft. each time



WATER PLANTS EARLY IN
THE AM

saves
💧 **25 GALLONS**
each time you water



SET MOWER BLADE TO 3"
(ENCOURAGES DEEPER ROOTS)

saves
💧 **16-50 GALLONS**
per day



PLANT DROUGHT-RESISTANT
TREES AND PLANTS

saves
💧 **30-60 GALLONS**
per 1,000 sq. ft. each time



INSTALL DRIP-IRRIGATION

saves
💧 **15 GALLONS**
each time you water



INSTALL A "SMART"
CONTROLLER

saves
💧 **24+ GALLONS**
per day

Saving Water This Year, Helps Keep Water in Storage for Next Year.

CONSERVATION DEVICE REBATES

Turf rebate –

- \$2 per square foot except CVWD
- CVWD \$3 per square foot up to 800 square feet, then \$2
- Must pre-qualify for rebate
- Synthetic turf as long as pervious included



Turf Removal - Altadena

Before



After



This LAWC customer received a \$6,300 rebate for removing 3,150 square feet of turf!

Turf Removal – La Crescenta

Before



After



This CVWD customer received a \$3,800 rebate for removing 1,500 square feet of turf!

Turf Removal – La Cañada

Before



After



This VWC Customer Received a \$14,050 rebate for removing 7,025 square feet of turf!

CONSERVATION DEVICE REBATES

Weather Based Irrigation Controllers–

- < 1 acre, \$80 per unit
- ≥ 1 acre, \$35 per station
- Only WBICs that are Smart Water Application Tech. (SWAT)-tested or EPA WaterSense certified qualify for SoCal Water\$mart Rebates
- Check list of qualifying products before you buy



Source: epa.gov

CONSERVATION DEVICE REBATES

Soil Moisture Sensor System

- < 1 acre, \$80 per unit
- ≥ 1 acre, \$35 per station
- Measures soil moisture content in the active root zone on your property
- Eligible Soil Moisture Sensor systems must include a sensor, a calibrator and an irrigation controller
- Check list of qualifying products before you buy



Source: watersmartsd.org

CONSERVATION DEVICE REBATES

Rotating Nozzle

- \$4 each
- Minimum of 15
- Apply water more slowly and uniformly to prevent over-watering and encourage healthy plant growth;
- Use 20% less water than conventional spray heads
- Check list of qualifying products before you buy



Source: pro-sprinkler.com

CONSERVATION DEVICE REBATES

Rain Barrels

- \$75 each
- Minimum size of 50 gallons
- Maximum of 4 rainbarrels per home
- Check list of qualifying products before you buy



Source: hamiltonswcd.org

CONSERVATION DEVICE REBATES

Cisterns

- \$0.15 per gallon up to a max. of \$2,000 per customer
- Minimum size of 300 gallons



Source: bushmanusa.com

CONSERVATION DEVICE REBATES

Flow Sensing Shutoff Device

- \$33 each
- Flow sensing shut-off devices are useful tools to prevent water waste from sudden leaks by automatically shutting off the water when a leak occurs within an irrigation system, as well as within a home



Source: gamurdock.com

CONSERVATION DEVICE REBATES

Hot Water Recirculation System

- \$75 each
- A hot-water recirculation system is a small water pump that works in conjunction with a plumbing system and a hot water heater



Source: amazon.com (Watts 500800 Premier Model)

CONSERVATION DEVICE REBATES

Toilets

- \$100 each
- Must be WaterSense qualified with a capacity of 1.28 GPF
- Check list of qualifying products before you buy



CONSERVATION DEVICE REBATES

Clothes Washers

- \$85 each
- Must have a water factor of 4.0 or less to qualify
- Please see list of qualifying products



CONSERVATION DEVICE REBATES

- Commercial Rebates
 - Turf Removal
 - High-Efficiency Toilets
 - Ultra Low and Zero Water Urinals
 - Connectionless Food Steamers
 - Air-Cooled Ice Machines
 - Conductivity Controllers
 - Dry Vacuum Pumps
 - Irrigation Controllers
 - Laminar Flow Restrictors
 - Rotating Nozzles, and much more!



WHAT IS FOOTHILL MWD DOING?

- Conservation rebates offered:

<http://www.fmwd.com/Conservation.aspx>

- Drought Tolerant Landscaping and Other Water Use Efficiency Classes Offered Periodically
- Please call (818) 790-4036 for information

